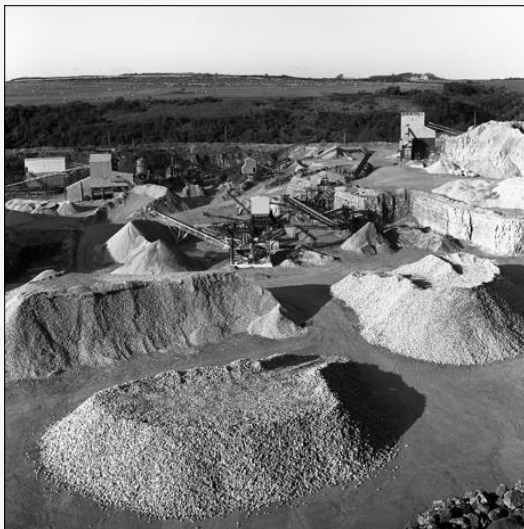


# Swanworth Quarry

Owned by Tarmac Roadstone 1980-2011



1992 Swanworth, a quarry on a different scale, using explosives.



Crushed stone - 3mm to 40mm



Gabion/cage stone and Rock Armour/ Sea Defences

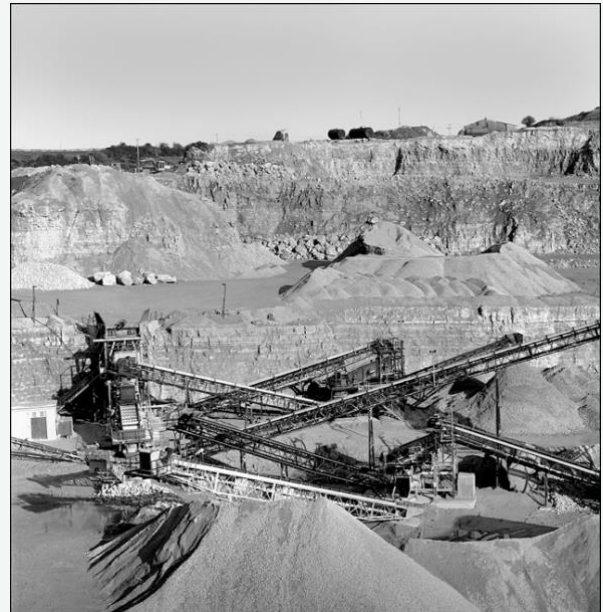
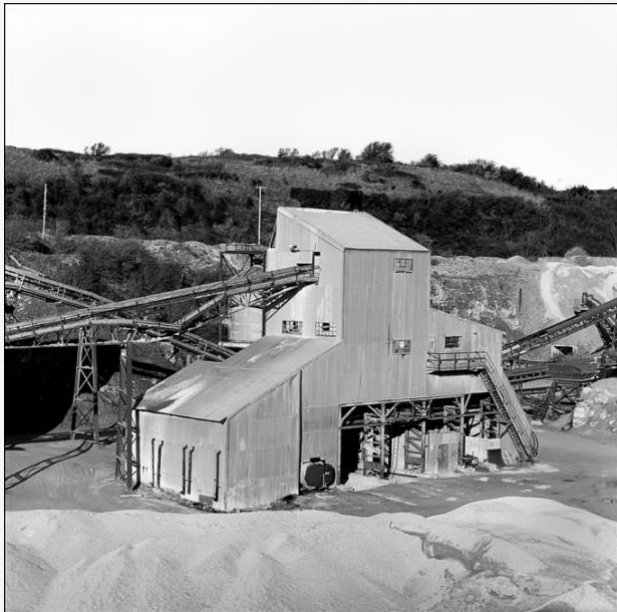
1991





### STONE CRUSHING PLANT, 1987

Swanworth quarry operating at its peak extracting and processing Portland Stone for aggregate.



1991